

HYLOZOIC VEIL

THE LEONARDO
SALT LAKE CITY, UTAH - 2011

Philip Beesley
Living Architecture Systems Group



I Hylozoic Veil: The Leonardo - Salt Lake City, Utah - 2011.

First edition

Published by Philip Beesley

© Philip Beesley 2016

All rights reserved. No part of this catalogue may be reprinted or reproduced or utilized in any form or by any electronic, mechanical, or other means, now known or hereafter invented, including photocopying and recording, or in any information storage or retrieval system, without permission in writing from the publisher.

Every reasonable attempt has been made to identify owners of copyright. Errors or omissions would be corrected in subsequent editions.

Library and Archives Canada Cataloguing in Publication

Beesley, Philip, 1956-, artist, sculptor

Hylozoic veil : the Leonardo : Salt Lake City, Utah - 2011

/ Philip Beesley (Living Architecture Systems Group).

Exhibition catalogue.

Includes bibliographical references.

Electronic monograph in PDF format.

ISBN 978-1-926724-88-1 (pdf)

I. Beesley, Philip, 1956- --Exhibitions. I. Title. II. Title: Leonardo.

host institution II. Title.

NA749.B434A4 2016q

709.2

C2016-902213-7

Publication Design and Production Philip Beesley Architect Inc.

This publication is set in Gill Sans

DOI 10.21312/978-1-926724-88-1

This publication is available for download at: http://www.philipbeesleyarchitect.com/sculptures/1016_The_Leonardo/Hylozoic-Veil-PDF-Article.pdf



2 Hylozoic Veil: The Leonardo - Salt Lake City, Utah - 2011.

INTRODUCTION

Hylozoic Veil opened to the public on October 6, 2011 as part of the full opening of The Leonardo in Salt Lake City Utah. The work spans three stories and is made of hundreds of thousands of lightweight digitally fabricated components fitted with microprocessors and sensors. The glass-like fragility of this artificial forest is created by an intricate lattice of small transparent acrylic meshwork links, covered with a network of interactive mechanical fronds, filters, and proximity sensors. Alongside mechanized component systems, a liquid system has been introduced into the environment, supporting simple chemical exchanges that share some of the properties of living organisms. This system is based on 'protocells', prototype cells that use inorganic ingredients combined into cell-like forms.

The installation at The Leonardo is preceded by sixteen stages of development that have been installed around the world. One of the most prominent of these was the 2010 Venice Biennale for Architecture, where the environment was selected to represent Canada. Each phase of this ongoing project has incorporated new features and improved engineering. The Leonardo's installation is the largest project yet, and features many of the components that were installed in Venice. These have, however, been entirely reworked, making the details more durable and efficient, and increasing the movement and the stability of chemical reactions.

EXHIBITION CREDITS

SPONSORS

Ontario Arts History

Canada Council for the Arts

Waterloo Architecture

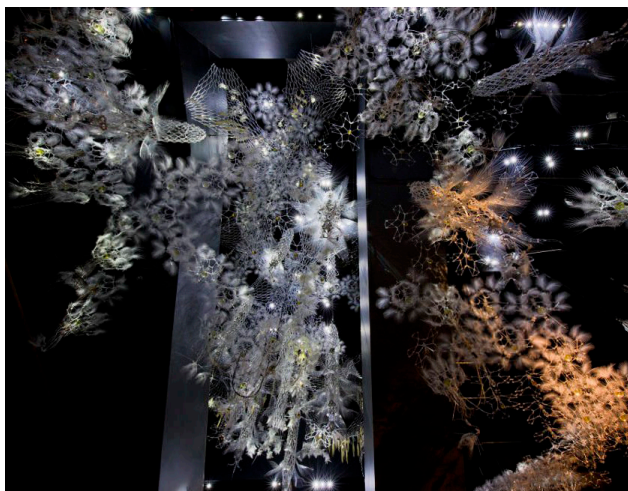
Social Sciences and Humanities Research Council of Canada

Natural Sciences and Engineering Research Council of Canada

The Redevelopment Agency of Salt Lake City



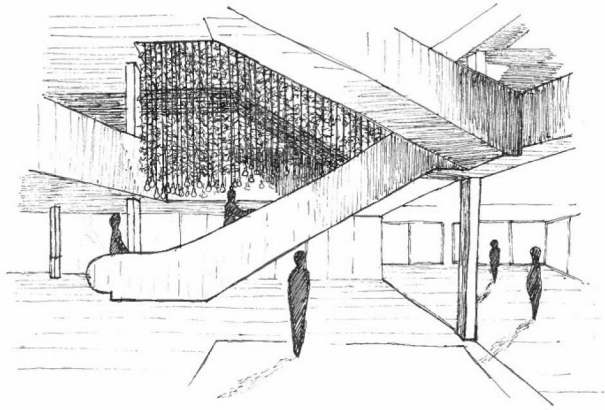
3 Hylozoic Veil: The Leonardo - Salt Lake City, Utah - 2011.



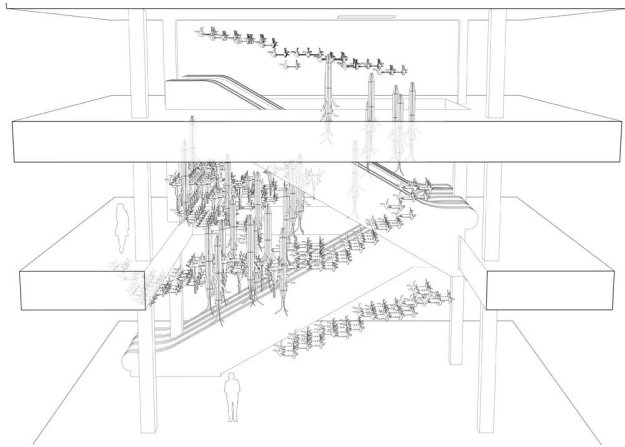
4 Hylozoic Veil: The Leonardo - Salt Lake City, Utah - 2011.



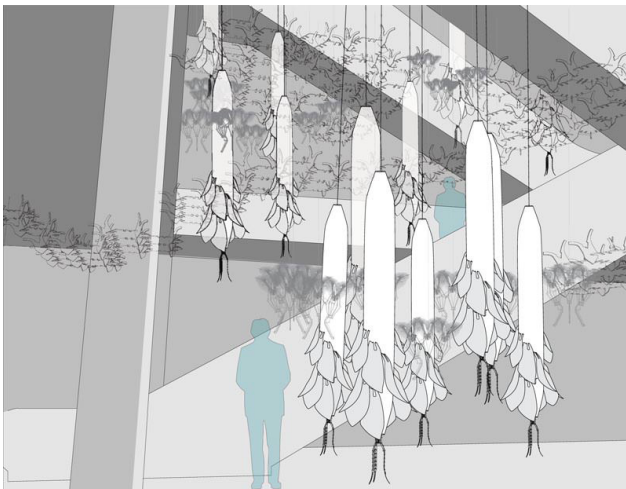
5 Hylozoic Veil: The Leonardo - Salt Lake City, Utah - 2011.



6 Hylozoic Veil: The Leonardo - Salt Lake City, Utah - 2011.



7 Hylozoic Veil: The Leonardo - Salt Lake City, Utah - 2011.



8 Hylozoic Veil: The Leonardo - Salt Lake City, Utah - 2011.

REFERENCES

For Further Reading:

- Beesley, Philip, ed. *Living Cities: Vision and Method*. Cambridge: Resource Positive Architecture and Waterloo Architecture, 2011. Print.
- Beesley, Philip. *Hylozoic Ground: Liminal Responsive Architectures*. Toronto: Riverside Architectural Press, 2010. Print.
- Beesley, Philip. "Case Study: Meshes as interactive surfaces." *Digital Fabrication in Architecture*. By Nick Dunn. London: Laurence King, 2010. 46-48.
- Beesley, Philip. "Soil and Protoplasm." *Manufacturing the Bespoke*. Ed. Bob Sheil. London: Wiley, 2010. 102-119.
- Beesley, Philip, ed. *Kinetic Architectures and Geotextiles Installations*. Toronto: Riverside Architectural Press, 2007 & 2010. Print.
- Krauel, Jacobo, Jay Noden, and William George. *Contemporary digital architecture: design & techniques*. Barcelona: Links, 2010.
- Schwartzman, Madeline. *See yourself sensing: redefining human perception*. London: Black Dog Publishing, 2011. 62.